

LG - AREAL



«Punkthaus.»

Zählerweg 12

130 m² of storage space in the basement

460 m² of office space on the ground floor

470 m² of office space on the first floor



Interim use 2019 to 2022/23

Industrial park at the Zug train station

The Punkthaus, right next to Zug train station, is part of the Landis+Gyr industrial estate, with its historic buildings and industrial charm. Punkthaus, with its rich heritage, is now available for a fixed term lease between 2019 and 2022/23. Such unique charisma and such a central top-quality location make Punkthaus a rare opportunity in the Zug/Zurich area.

«Business in a prime location.»

«The site is directly adjacent to the train station of the city of Zug, which is famous for its tax incentives.»



Just a stroll to the city or lake

In the centre of Europe and in the heart of Switzerland – it is a location with a very attractive tax regime.

Outstanding infrastructure is within walking distance. There are shopping facilities and a rich choice of dining options, as well as excellent transport connections – right round the corner.

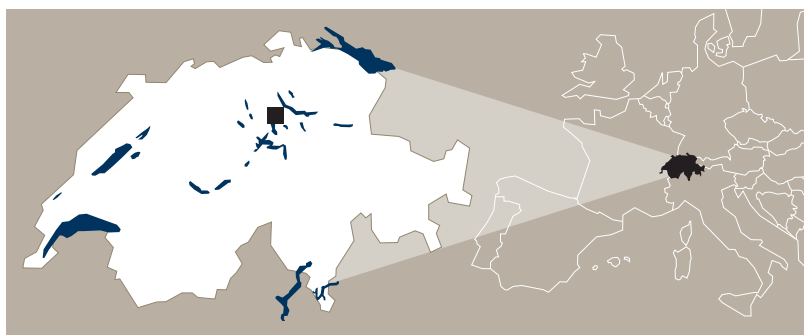
Whether by public transport or by car – you can reach Zurich and Lucerne within 20 minutes, Zurich airport is merely half an hour away and you'll be in Basel in about an hour.

Legend

- ① Train station
- ② Post office
- ③ M-Fitness park
- ④ Restaurants
- ⑤ Metalli shopping centre

Bus stops/bus lines

- | | |
|----------------|------------------|
| ① Bahnhofplatz | 1/2/5/13 |
| ② Metalli | 3/4/6/7/11/14/16 |
| ③ Landis+Gyr | 6/7/11/16 |
| ④ Bleichi | 4/14 |
| ⑤ Guthirt | 3 |
| ⑥ Göbli | 4 |



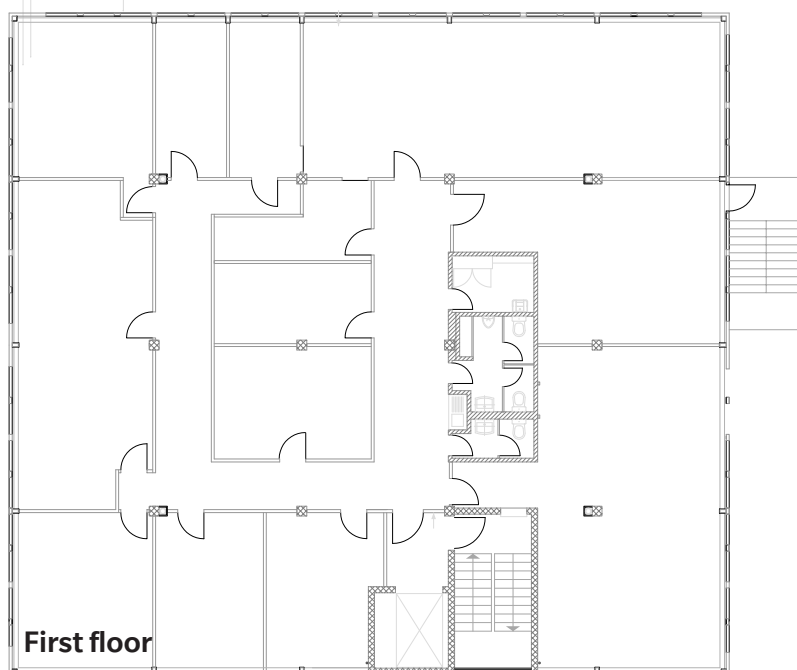
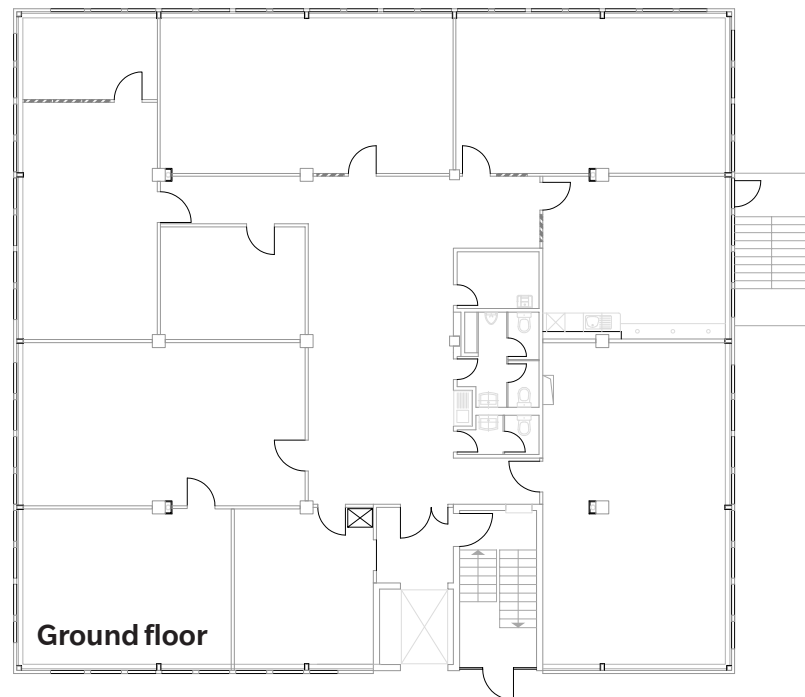
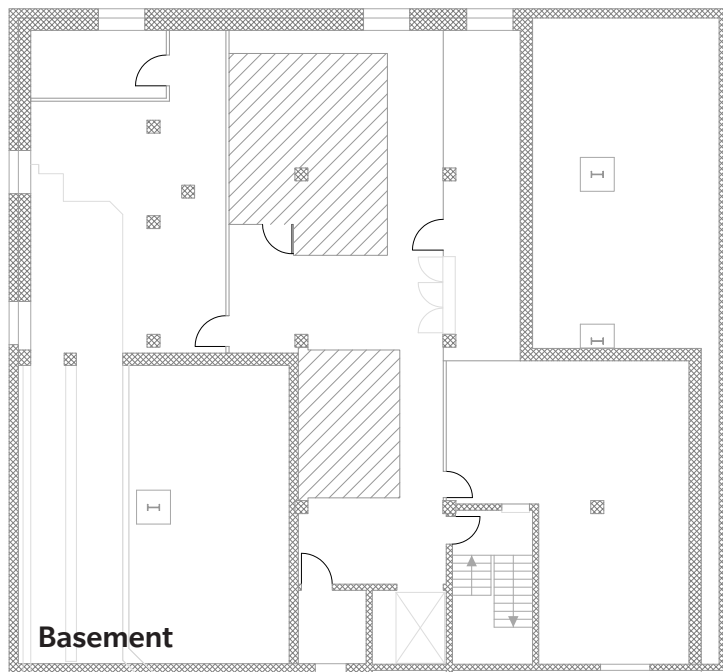
«Flexible divisions for offices.»

Creative use

Are you an up-and-coming advertising agency or architecture startup? Are you in digital communication and looking for inspiring offices? Perhaps you advise and support companies in their development and offer coaching? Or are you a distinctive type of lawyer? In "Punkthaus" you will find the ideal space for your business.

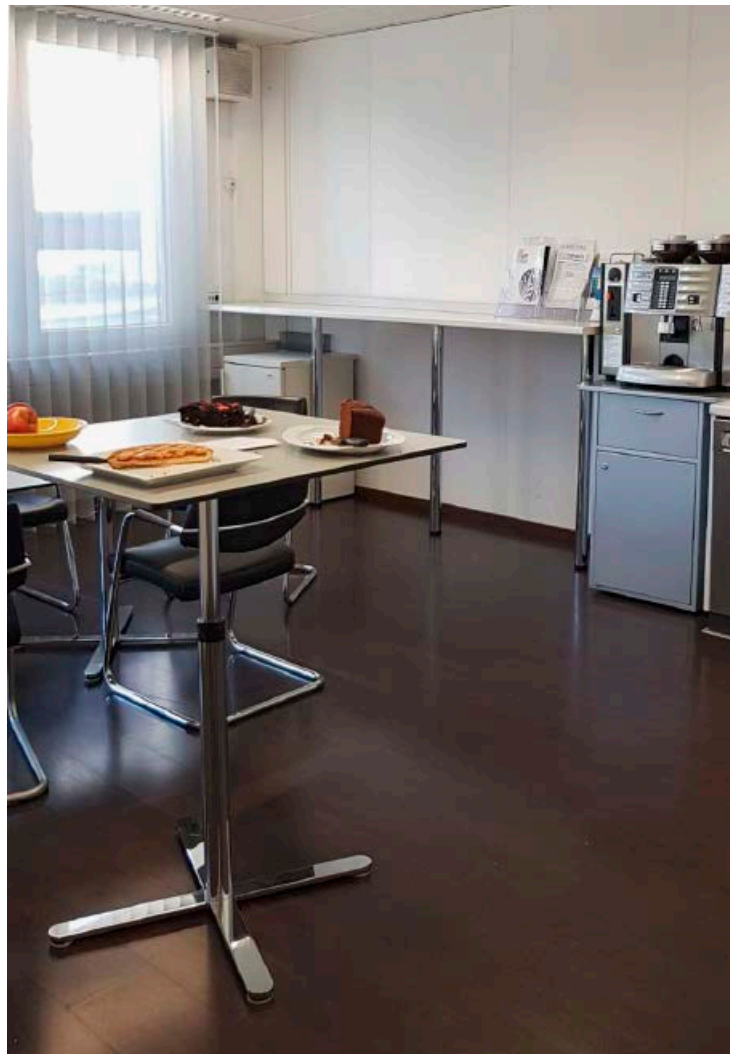
Punkthaus

The Punkthaus offers flexible office space (partial, total or several floors). Separate sanitary facilities for the ladies and the gents are available on each level and the passenger lift will take you comfortably to the second floor. In the basement, you will find plenty of storage space for your files, furniture or anything else that you don't currently need.





- Right by the train station
- Historic buildings with industrial charm
- Interim use from 2019 to 2022/23
- Flexible office space on various floors
- Passenger lift, storage space in the basement
- Up-to-date building technology
- Separate ladies and gents sanitary facilities



A visit is worth more than a thousand pictures. See for yourself: the well-maintained, fully-fitted rooms are equipped with tea corners, coat spaces and all the necessary cabling, making plug-and-work much more than a buzzword here.

Contact and rental

 **ADVENDIS**

ADVENDIS AG

Property Marketing Advice

Artherstrasse 7 | PO Box 201 | CH-6301 Zug

Tel. +41 41 729 41 20